

## Standard DZR Ferrules for Dry Tapping



### Size available:

- 20mm (3/4")
- 25mm (1")
- 32mm (1.25")
- 40mm (1.5")
- 50mm (2")

### System Applications

- Suitable for drinking water and non-drinking water
- Pressure rating up to PN16

### Compliance Standards and Approvals

- Comply with AS/NZS 3718:2005
- DZR brass comply with AS2345
- Resilient elastomeric seal comply with AS 1646
- Valves suitable for potable water and certified to AS/NZS 4020

### Various Outlet Options

- CB - Copper Compression Outlet
- SB - Copper Soldered Outlet
- MB - Plain Male Outlet



### More Enquiries

**Wenac Industries**

**7 / 5 Turbo Drive,  
Bayswater North**

**Ph: 0452 118 008**

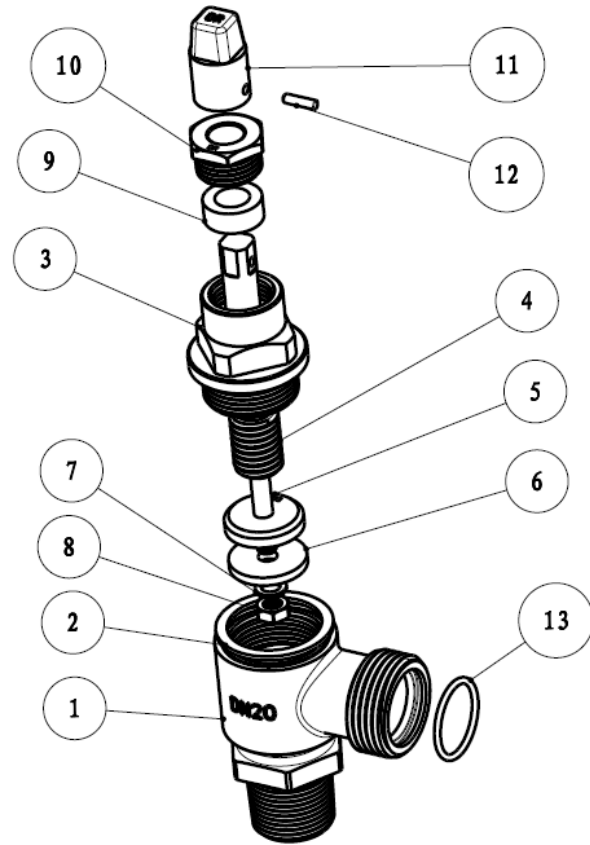
**Email:**

**[jw@wenac.com.au](mailto:jw@wenac.com.au)**

**Website:**

**[www.wenac.com.au](http://www.wenac.com.au)**

### Component and Material List



No	Component	Description	Material
1	WSF20-01	DN20 Body	CW602N
2	37.5x30.3x1.5	Body Seal	PTFE
3	WSF20-02	Stuffing Box	CW602N
4	WSF20-03	Spindle	CW602N
5	WSF20-04	Jumper Valve	CW602N
6	25x6.1x3.0	Seal	EPDM
7	10x6.1x1	Washer	SS304
8	M6	Nut	SS304
9	WSF-seal	Gland Seal	PTFE
10	WSF20-05	Gland Nut	CW602N
11	WSF20-06	Key Top	CW602N
12	WSF-pin	Key Pin	HPb59-1
13	WSF-Oring	O Ring	EPDM