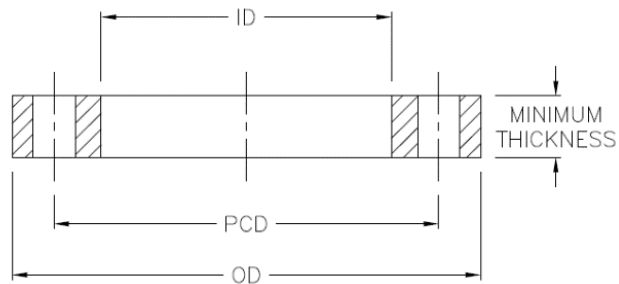


Stainless Steel 316 Backing Rings



Typically for use with PE100 polyethylene pipe flange adaptors
 Comply with AS/NZS 4087 Figure B7 and AS2129 Table D & E
 Pressure rating to PN16



DN	Code	Product description	OD	ID	PCD	Holes (n x d)	Bolt Size	Thickness	
80	SSR080	316 S/S PN16 Table D/E 90 PE	185	108	146	4 x 18	M16	11	
100	SSR125D	316 S/S PN16 Table D 125 PE	215	140	178	4 x 18	M16	13	
	SSR125E	316 S/S PN16 Table E 125 PE				8 x 18			
150	SSR180D	316 S/S PN16 Table D 180 PE	280	195	235	8 x 18	M16	13	
	SSR180E	316 S/S PN16 Table E 180 PE				8 x 22			M20
200/225	SSR225D	316 S/S PN16 Table D 225 PE	335	238	292	8 x 18	M16	19	
	SSR225E	316 S/S PN16 Table E 225 PE				8 x 22			M20
	SSR225B7	316 S/S PN16 B7 225 PE				8 x 18			M16
250	SSR280D	316 S/S PN16 Table D 280 PE	405	300	356	8 x 22	M20	19	
	SSR280E	316 S/S PN16 Table E 280 PE				12 x 22			
300	SSR315D	316 S/S PN16 Table D 315 PE	455	345	406	12 x 22	M20	23	
	SSR315E	316 S/S PN16 Table E 315 PE				12 x 26			M24

More Enquiries

Wenac Industries

**7 / 5 Turbo Drive,
Bayswater North**

Ph: 0452 118 008

Email:

jw@wenac.com.au

Website:

www.wenac.com.au